



Abby Davidow (CS), Adam Soelter (CS), Alfonso Martello (CS), Archana Ramakrishnan (CS), Grant Schnettgoecke (CS)

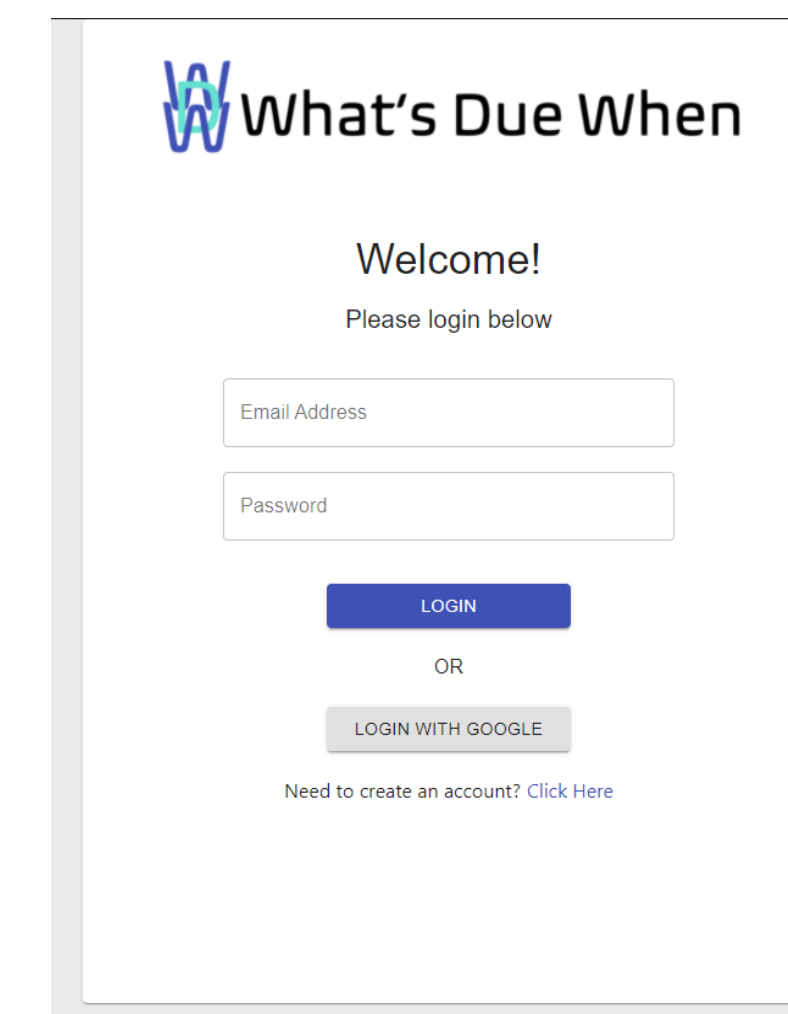
Description & Purpose

What? What's Due When (WDW) aims to provide a central application that faculty and students can use to control the flow of information.

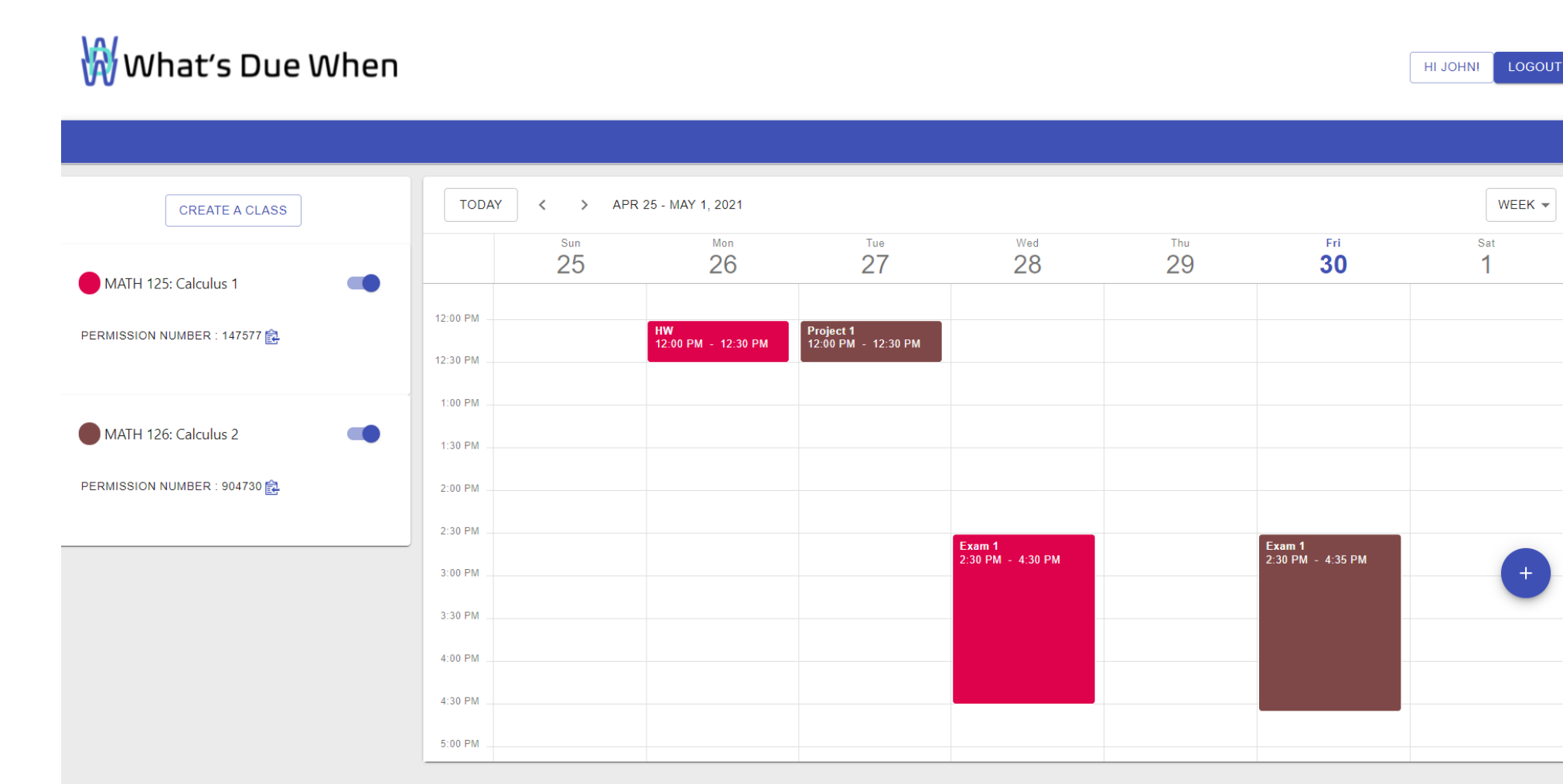
Why? College students are constantly barraged by assignment, exam, and project deadlines.

How? Faculty can use WDW to add events (such as notes, due dates, or comments) directly to their students' calendars on either a weekly, monthly, or semester basis.

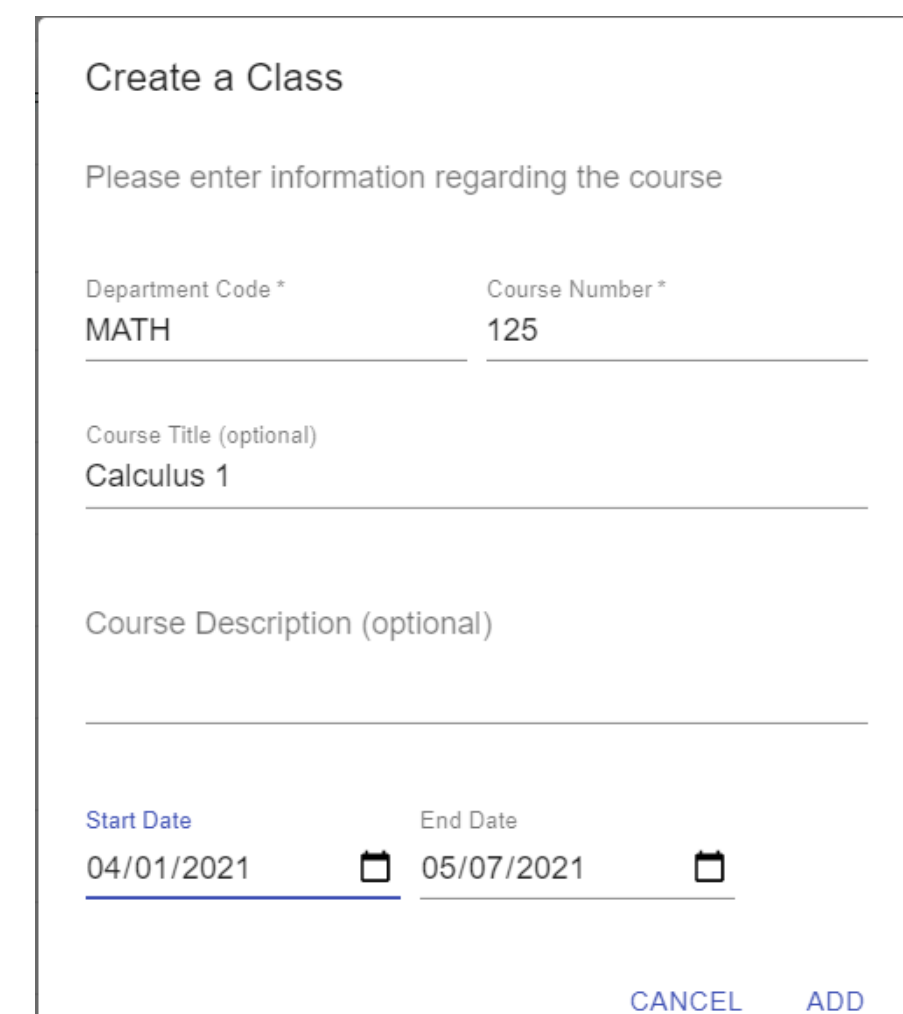
Result: The result is an online platform where students and faculty can have schedules delivered in a manageable and convenient way.



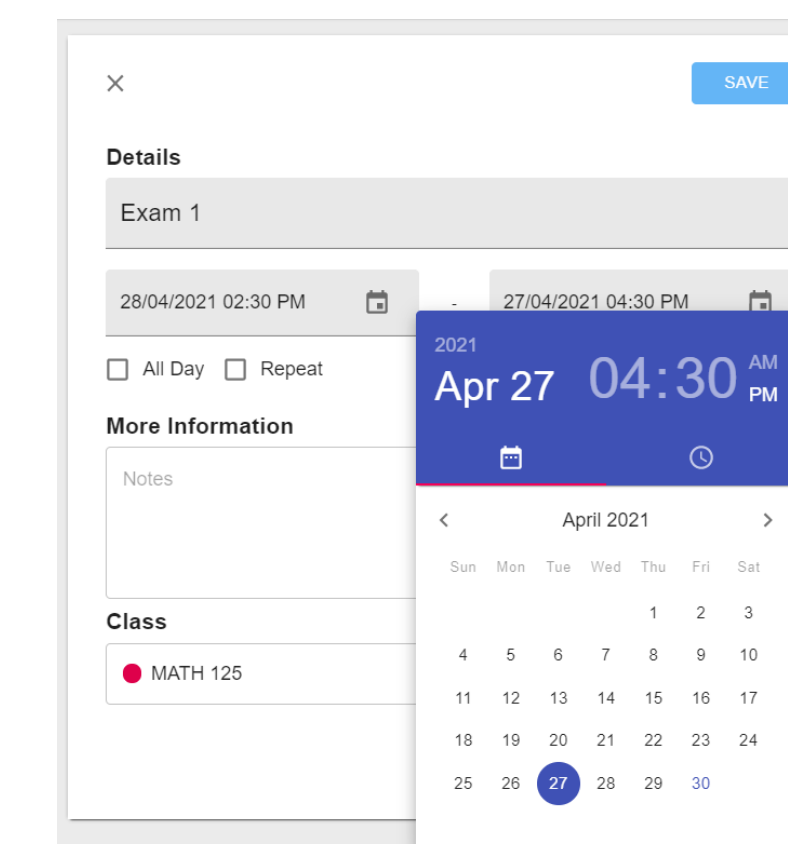
Login Page



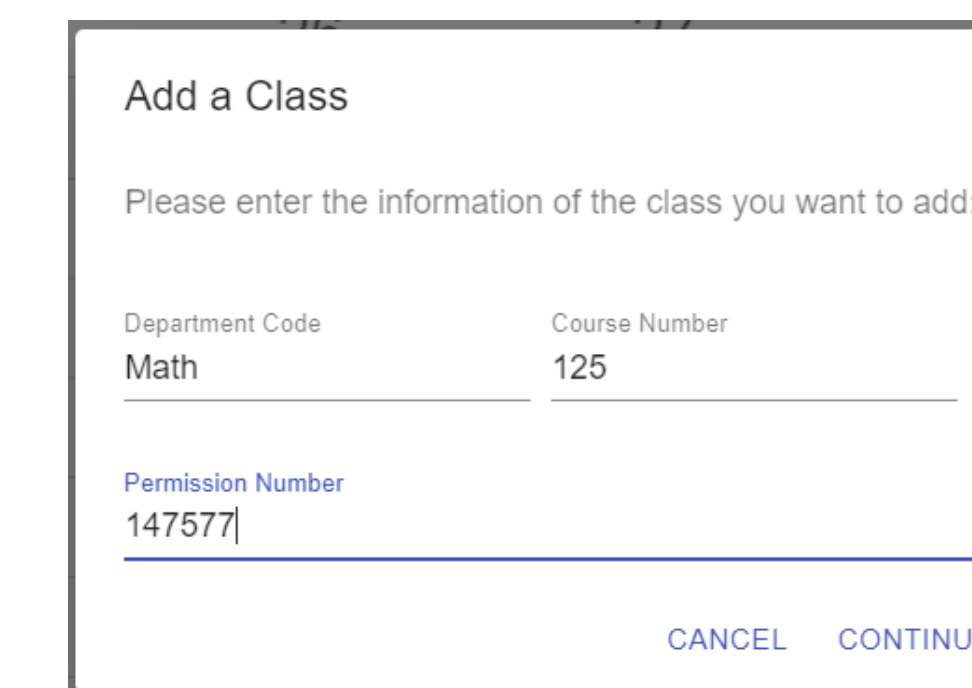
Professor Calendar View



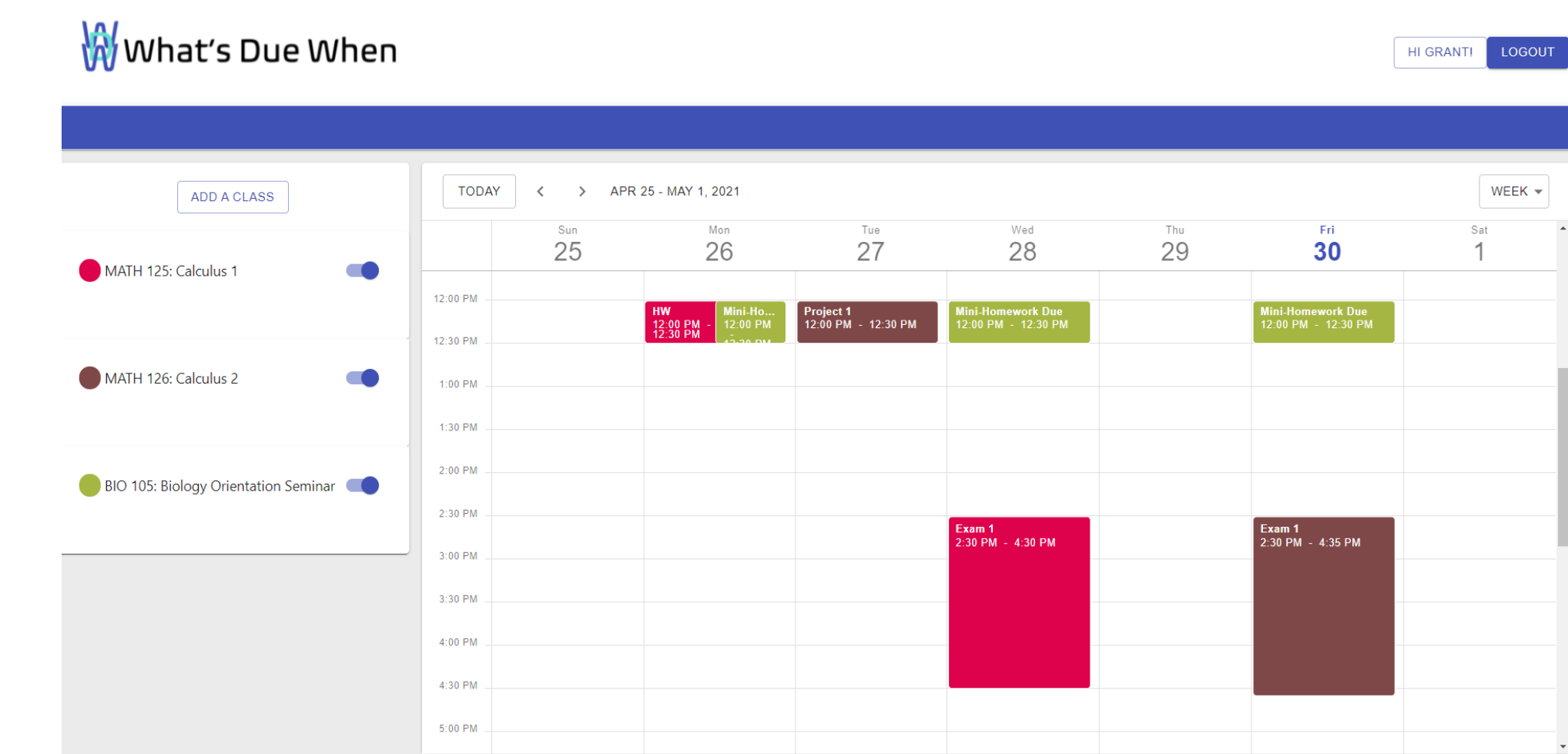
Create a Class



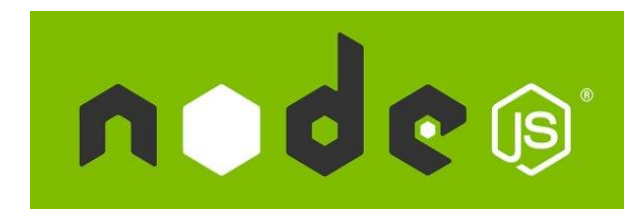
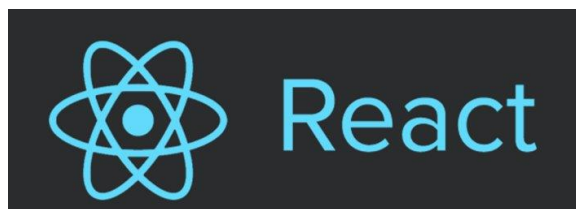
Add an Event



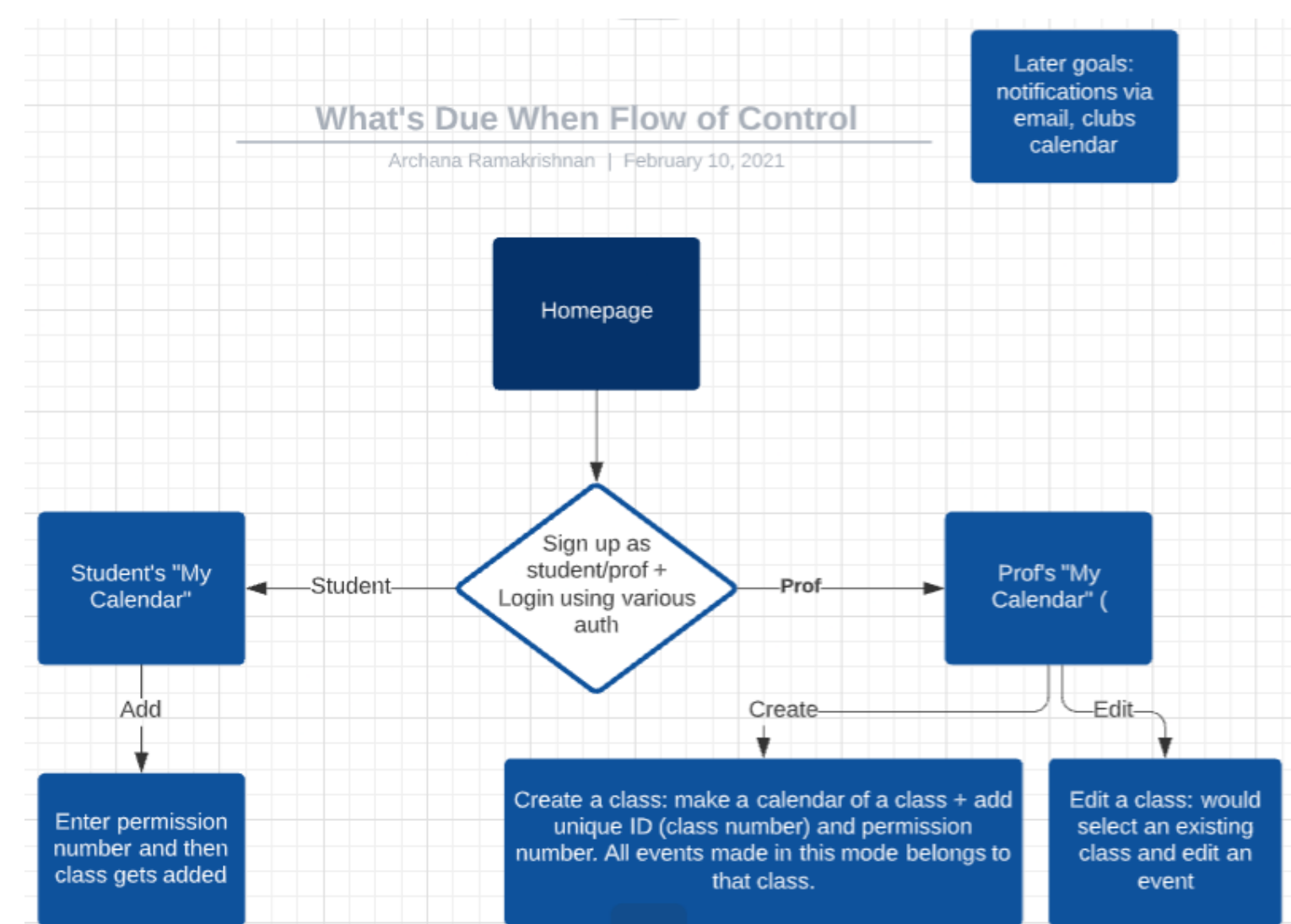
Add a Class



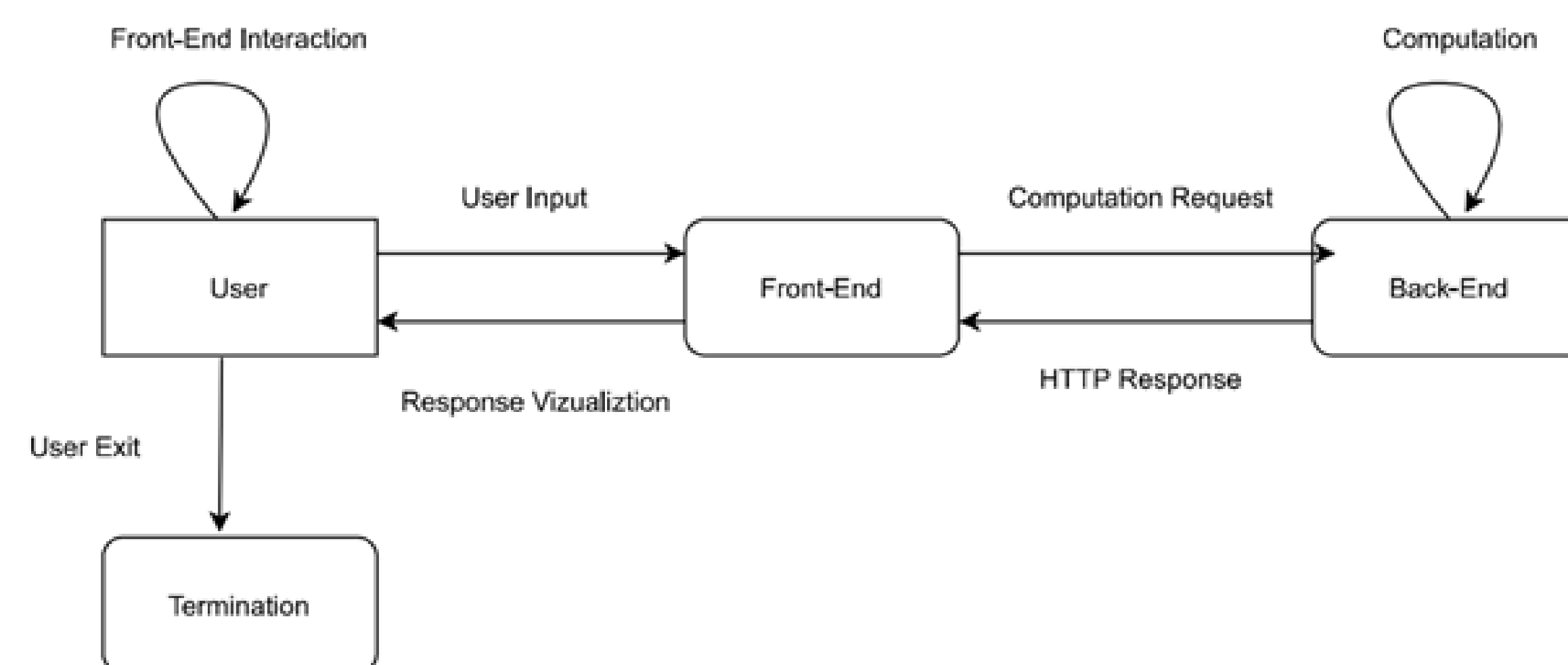
Student Calendar View



Design  mongoDB.  Express JS



The control flow for a user interacting with the front-end.



A diagram showing the interaction between the back-end and front-end.

Ethical & Intellectual Property Issues

Privacy: Ensuring students' rights as laid out in the Family Educational Rights and Privacy Act (FERPA) are protected. Students have the right to choose what is disclosed about their education records.

Integration: An intellectual property issue that could arise is if we plan to integrate our project with KU.